



Next Week:

| After School Club Info | | | Outstanding Payments | |
|------------------------------|--------------------------|----------------------------|----------------------------------------------------------------------------------------------------|-------------------------|
| | | | Please log in to your ParentPay accounts and clear all outstanding balances for trips and lunches. | |
| Monday 22 nd July | Tuesday 23 rd | Wednesday 24 th | Thursday 25 th | Friday 26 th |
| • | • Leavers Service | INSET DAY | SUMMER HOLIDAYS | |
| SUMMER HOLIDAYS | | | | |
| Monday 2 nd Sept | Tuesday 3 rd | Wednesday 4 th | Thursday 5 th | Friday 6 th |
| INSET DAY | SUMMER HOLIDAYS | BACK TO SCHOOL | | |

How quickly time flies! It seems that this academic year has passed with lightning speed. There has been so much to celebrate and remember from another learning-filled and experience-enriched year here at SRG. I know the children seem to have had an amazing time, particularly with the celebrations and events of the final week and days of term.

Thank you again to all parents and carers for all of your support this year - the strong partnership with you is something that we cherish as a staff and governor team and one that is essential to supporting your child to 'live life to the full and to be the best they can'.

I look forward to welcoming all children and families back to school on Wednesday 4th September.

From all of us here at school, we hope you have a safe, happy and restful summer break.

Best wishes, Ed O'Hara.

Speech Day Event

Well done again to all of the children for a spectacular annual Speech Day event in the marquee on Friday.

It was lovely to see the performances that had Olympics and Olympians themes - from Reception's heart-warming 'stars' all the way through to Year 6's comic and confident on-stage presence, the children really did us proud.

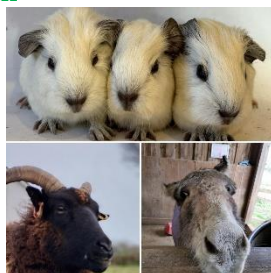
A big thank you again to all those parents, carers and relatives who came along to support and to the on-site school meal catering team - Lyndsey, Jo and Claire from Chartwells for the tasty food provided. Also a well done to the full staff team for getting the children ready so well and preparing and running the event - what a super tradition.



School and Community Farm

The animals on the farm love their visits and cuddles from the children as well... if you're able to come along on a weekend or over the summer holidays, please put your names down here:

www.schoolinterviews.co.uk
Code: 9qx4p



Farm Music Night

A great deal of fun was had by all adults from families and friends to people from the community at the Farm music night on Friday. It is the second year of this fundraising and celebratory evening to mark another successful year for our school and community farm. With winning the [Demonstration School Status](#), and children enjoying more use of the farm in curriculum and enrichment sessions than ever, there was a lot to celebrate. Thank you to Loretta, Cat and the full farm committee team for helping to organise and run the event.

In The News

BBC Radio Cornwall came to visit us again this week and interviewed children from Year 5 who were harvesting some enormous potatoes, Year 4 who had harvested, cooked and eaten some delicious produce, even listing a 'fresh from the farm menu' and Reception children who were learning how to prepare and cook produce from their 'no dig' allotment bed.

We have been told that the radio broadcast will go live on Wednesday 24th July - look out for links of our school Facebook page too.

Leavers

We are enjoying the Year 6 Leavers performance this afternoon and look forward to wishing this delightful group of children the very best of luck as they venture on towards their exciting next steps of their lives.

We thank Mrs Pearson and Miss Gerry for all their hard work and support to the children of SRG as they move on to a potential move abroad and a new school respectively.

Mr Yeoman and Mr Mugford are finishing their TA roles with us, but staying on to start their year of School Direct teacher training - so you'll still see them around.

Miss Maxa, Miss Holmes and Mr Bray have finished their teacher training with us and are moving on to exciting new adventures.

Thank you all for your support of the children and staff team.

Donation from the Community Lunch Club

We were delighted to receive an extremely kind donation of £200 for our school and community farm from the Landrake Community Lunch Club Committee. Children from Years 5 and 6 have loved going in small groups to help serve the members of the community who go for the monthly free lunch at the Village Hall. Sometimes they have even sung some songs and always enjoy having a chat with people from the village.

Several major local model shops and clubs have been invited to an exhibition at Geffery Memorial Hall in Landrake to take place on Saturday 28 September this year running from 10am through to 4pm. This exhibition will cover model railways to model boats, radio controlled models and other forms of handicraft, as well as being a showcase for some local artists.

The ultimate aim of this village-organised event is to create a weekly or fortnightly handicraft 'members' club to be held in Geffery Memorial Hall and then go on to create an annual Arts and Crafts Show in the village.

It is to help encourage intergenerational relations between the age groups in the village and surrounding areas.



Landrake Model Club
SHOW
Saturday
28th September 2024
Free Entry
Geffery Memorial Hall, Landrake
Open: 10am to 4pm
Don't be shy - bring your own creations to share and show. Contact Dick Kingswell 07706 786208 for details
Refreshments available all day

The poster features a small image of a model ship on the left and a larger image of a model steam locomotive on the right. The text is arranged in a clear, bold layout with red and black colors.

DATES FOR YOUR DIARY

| | |
|---------------|------------------------------|
| 10-11 Oct | Yr 6: Overnight camp |
| Fri 25 Oct | Pre-School closing at 4.30pm |
| 28 Oct – 1Nov | <i>Half Term</i> |
| Fri 20 Dec | Pre-School closing at 4.30pm |
| 23Dec – 3Jan | <i>Christmas Holidays</i> |
| Mon 6 Jan | <i>Inset Day</i> |
| Tue 7 Jan | Back to School |
| 13-14 Feb | Yr 3: Residential |
| Fri 14 Feb | Pre-School closing at 4.30pm |
| 17-21 Feb | <i>Half Term</i> |
| Fri 4 Apr | Pre-School closing at 4.30pm |
| 7 – 21 Apr | <i>Easter Holidays</i> |
| Tue 22 Apr | <i>Inset Day</i> |
| Wed 23 Apr | Back to School |
| Mon 5 May | <i>Bank Holiday</i> |
| 12-16 May | SATs Week |
| 7-9 May | Yr 5: Residential |
| 8-9 May | Yr 4: Residential |
| 19-23 May | Yr 6: London |
| Fri 23 May | Pre-School closing at 4.30pm |
| 26-30 May | <i>Half Term</i> |
| Fri 6 Jun | <i>Inset Day</i> |
| Tue 22 Jul | Pre-School closing at 4.30pm |
| Wed 23 Jul | <i>Inset Day</i> |
| Thu 24 Jul | <i>Summer Holidays</i> |

